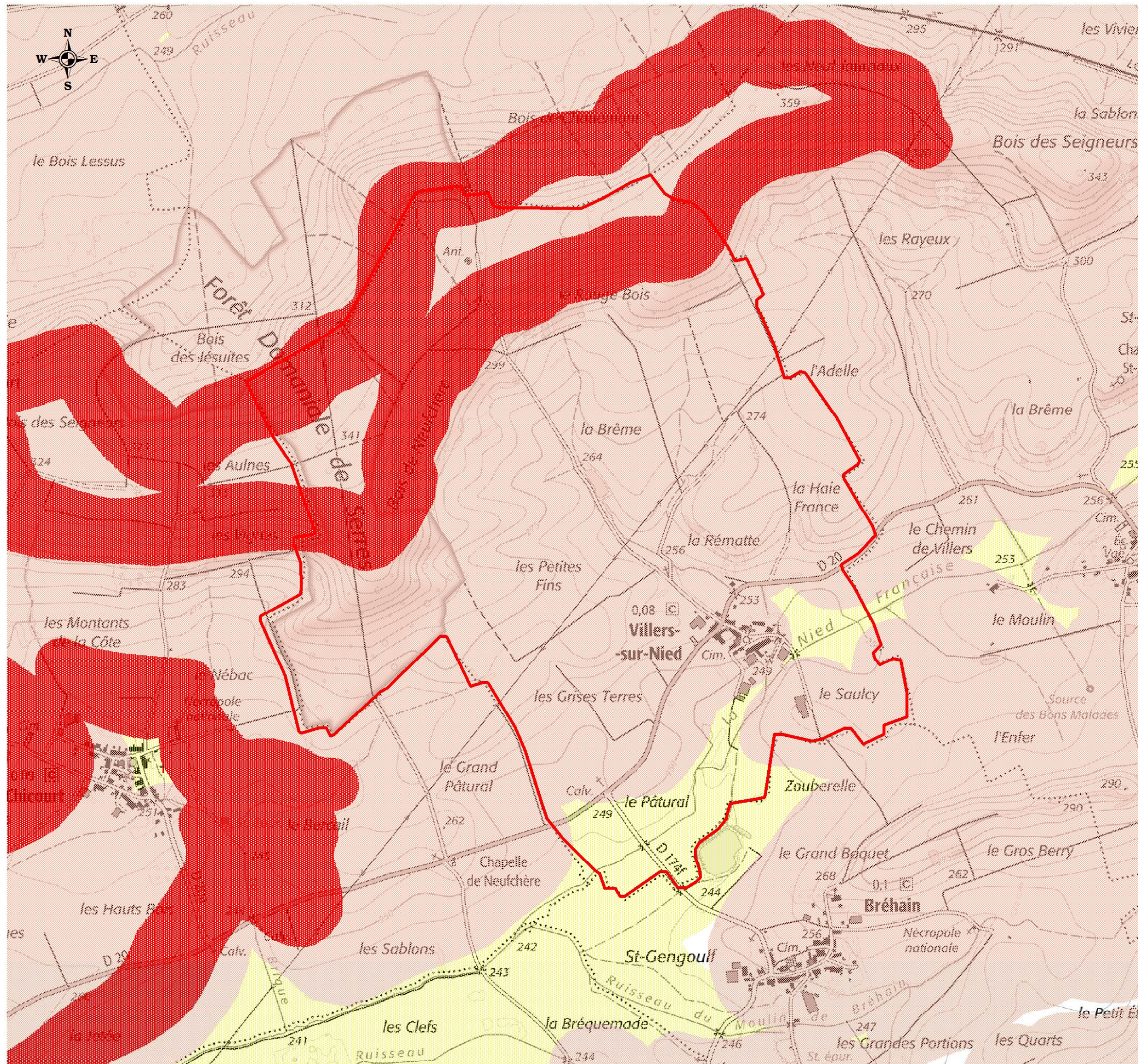





# VILLERS-SUR-NIED

**Cartographie des risques de mouvement de terrain différentiel consécutif à la sécheresse et à la réhydratation des sols argileux .**



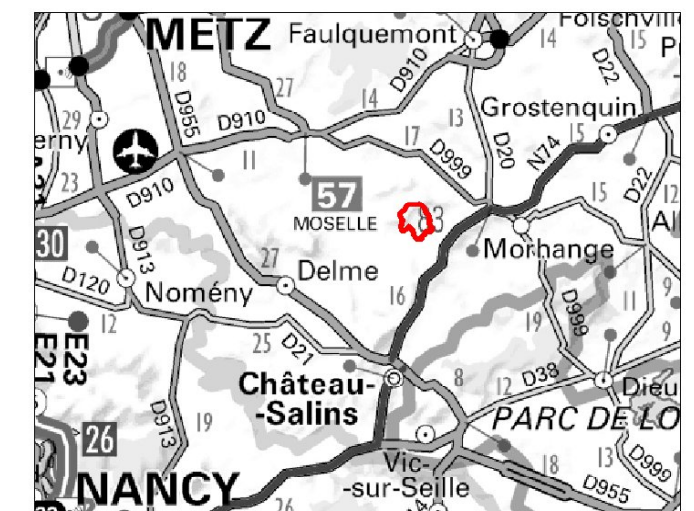
## LÉGENDE

Source : BRGM

-  Zones d'exposition forte
-  Zones d'exposition moyenne
-  Zones d'exposition faible

0 250 500 750 1000m

**AOUT 2020**



IGN scan 25 - 2018



**DDT 57/SRECC/UPR**