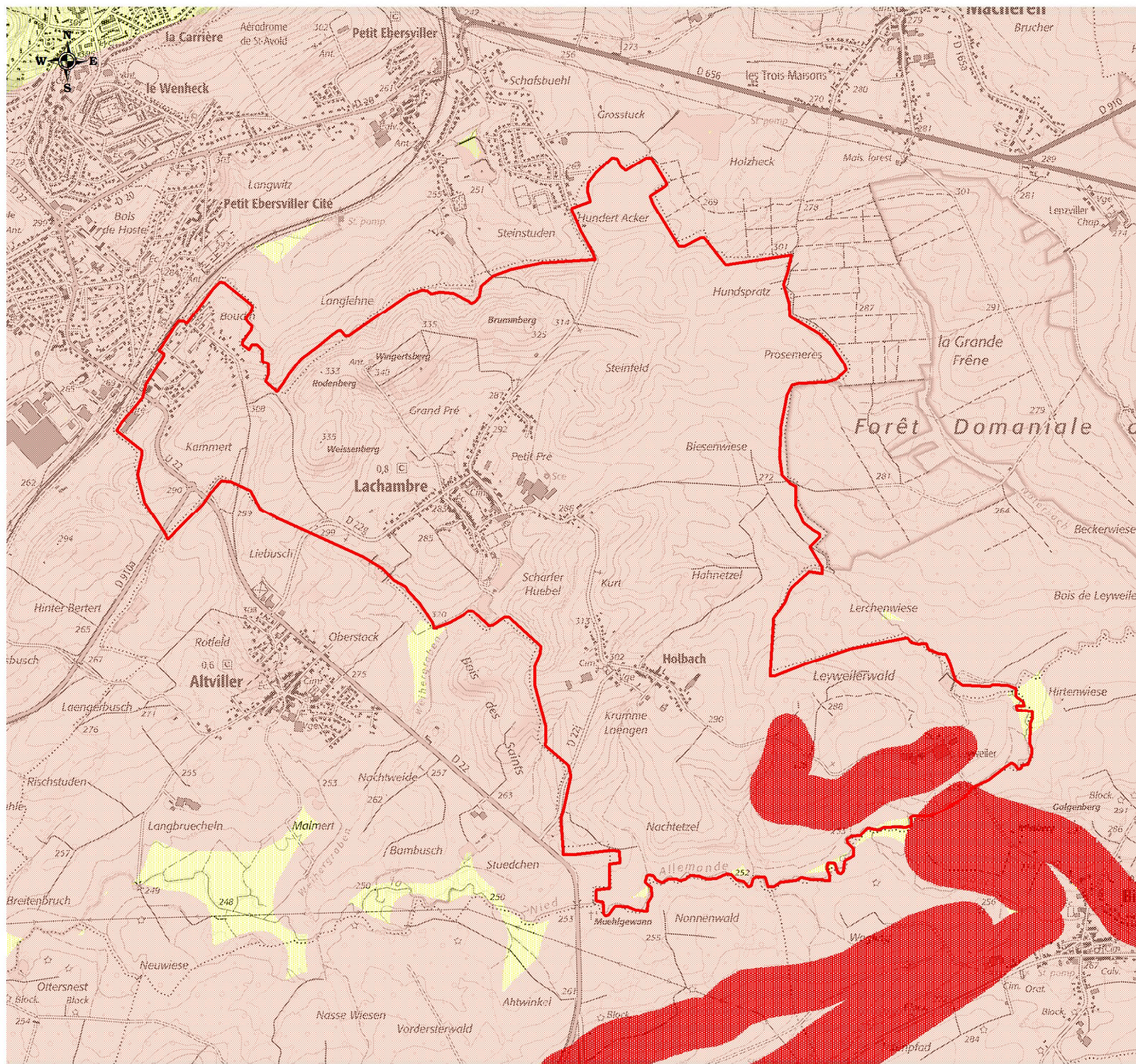





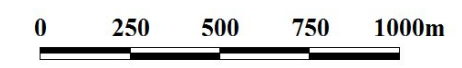
LACHAMBRE

Cartographie des risques de mouvement de terrain différentiel consécutif à la sécheresse et à la réhydratation des sols argileux .

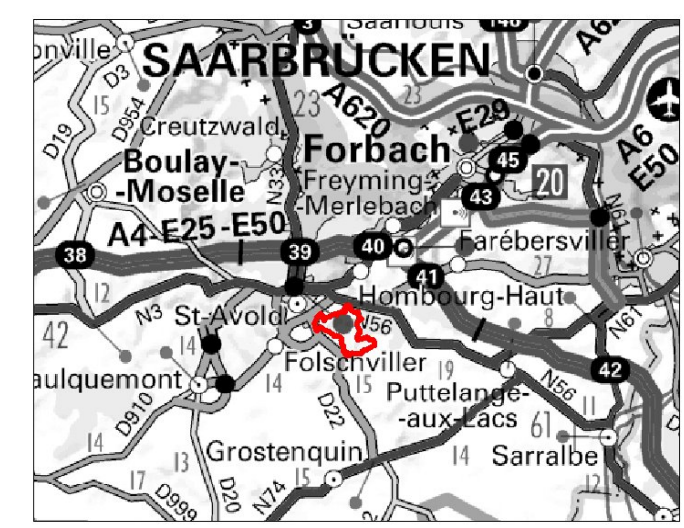


LÉGENDE
Source : BRGM

-  Zones d'exposition forte
-  Zones d'exposition moyenne
-  Zones d'exposition faible



AOUT 2020



IGN scan 25 - 2018



DDT 57/SRECC/UPR